



Please Take One

Enclosed you will find a condensed marketing packet for Idaho Point. For more information on specifications, upgrades, availability, and the Pillar Development difference, please call:

Craig Smith
509.899.7653

 **2-10**
Home Buyers Warranty All Pillar Development homes come with the popular 2-10 warranty

 **ENERGY STAR** All Idaho Point Homes are Energy Star Certified – Saving you money

IDAHO POINT



CURRENT PRICING Summer/Fall 2009

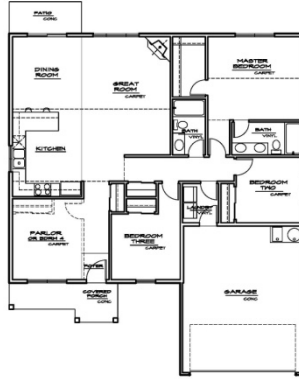
Homes Available for Pre-Sale

- Entiat – 1,549 Sq. Ft. Rambler \$232,999
- Methow – 1,602 Sq. Ft. Rambler \$242,999
- Spokane – 1,742 Sq. Ft. Rambler \$244,999
- Palouse – 1,776 Sq. Ft. Rambler \$253,999
- Quinalt – 1,778 Sq. Ft. Two Story \$259,999
- Chelan - 1,852 Sq. Ft. Rambler \$257,999
- Skykomish– 1,863 Sq. Ft. Two Story \$253,999
- Wenatchee – 2,017 Sq. Ft. Two Story \$274,999
- Okanogan– 2,112 Sq. Ft. Two Story \$278,999
- Skagit– 2,180 Sq. Ft. Two Story \$277,999
- Columbia – 2,224 Sq. Ft. Two Story (2 car version) \$289,999

Move-In Ready Homes



Quinalt – 1,778 sq ft
3 Bed, 2 Bath, Formal Dining
Special Pricing - **\$249,999**

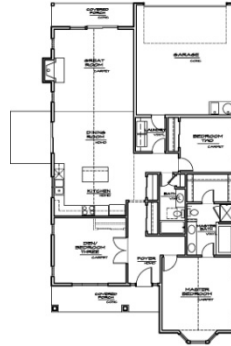


Entiat

1,549 Sq. Ft.
 Front Entry – Lots 1-7, 25
 Three Bedroom, Two Bath
 Fourth Bedroom or Den
 Optional

\$232,999

Not currently built

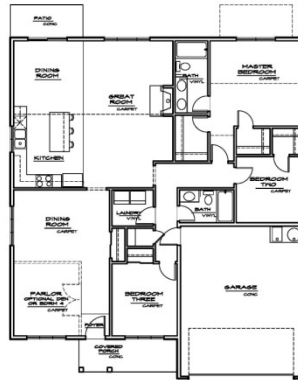


Methow

1,602 Sq. Ft.
 Alley Entry – Lots 8-24, 26-38
 Three Bedroom, Two Bath

\$242,999

Currently built and occupied
 on lot 24 (please respect
 owner's privacy)



Spokane

1,742 Sq. Ft.
 Front Entry – Lots 1-7, 24
 Three Bedroom, Two Bath
 Formal Dining
 Formal Living
 Fourth Bedroom or Den
 Optional

\$244,999

Not currently built

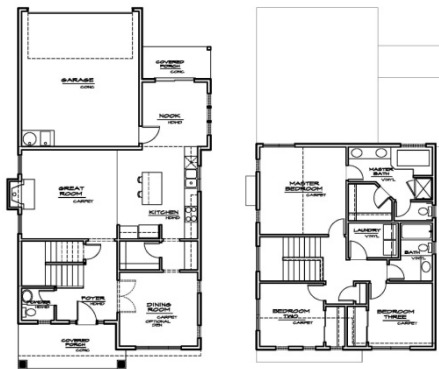


Palouse

1,776 Sq. Ft.
 Alley Entry – Lots 8-24, 26-38
 Three Bedroom, Two Bath
 Den

\$253,999

Currently built and occupied
 on lot 22. Please respect
 owner's privacy



Quinal

1,778 Sq. Ft.
 Alley Entry – Lots 8-24, 26-38
 Three Bedroom, 2-1/2 Bath
 Formal Dining or Optional Den
 Butler's Pantry

\$259,999

Currently available on lot 23
NEW PRICE - \$249,999

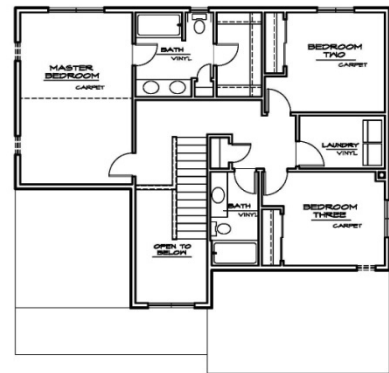
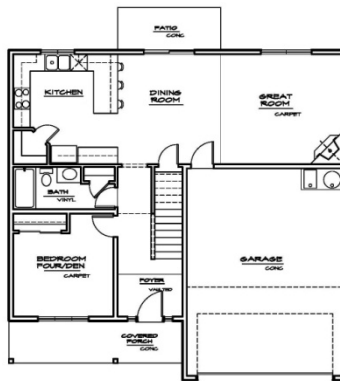


Chelan

1,852 Sq. Ft.
 Alley Entry – Lots 8-24, 26-38
 Three Bedroom, Two Bath
 Formal Dining
 Den

\$257,999

Currently built and occupied
 on lot 27 (please respect
 owner's privacy)

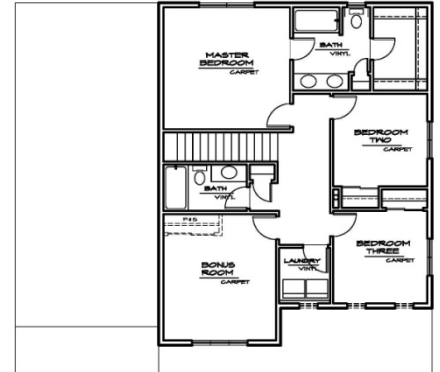
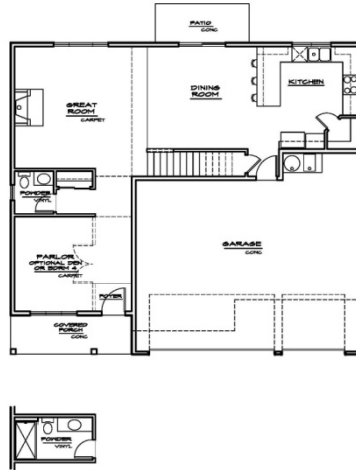


Skykomish

1,863 Sq. Ft.
 Front Entry – Lots 1-7, 24
 Four Bedroom, Three Bath

\$253,999

Not currently built in Idaho Point



Wenatchee

2,017 Sq. Ft.

Front Entry – Lots 1-7, 24

Three Bedroom, Two and a Half Bath with Optional Third Bath Conversion (See Drawing)

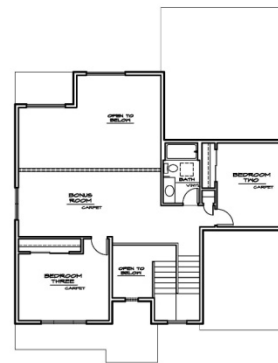
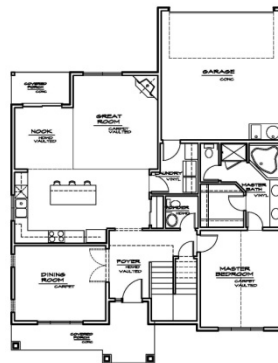
Formal Living with Den or Fourth Bedroom Optional

Bonus Room with Closet Optional

Three Car Garage

\$274,999

Not currently built in Idaho Point



Okanogan (Model Home)

2,112 Sq. Ft.

Alley Entry – Lots 8-24, 26-38

Master Down

Three Bedroom, Two and a Half Bath

Formal Dining or Den Conversion

Loft

\$278,999

Currently built on lot 26 (Model Home) and occupied on lot 17 (please respect owner's privacy)



Skagit

2,180 Sq. Ft.

Alley Entry – Lots 8-24, 26-38

Four Bedroom, Two and a Half Bath

Formal Dining

Den with Walk-In Closet Can Be Fifth Bedroom

Butler's Pantry

\$277,999

Currently built and sold on lot 20 and 21 (please respect owner's privacy)



Columbia

2,224 Sq. Ft.

Front Entry – Lots 1-7 (2 car garage only), Lot 25 (2 car or 3 car garage)

Three Bedroom, Two and a Half Bath

Formal Dining

Den

Bonus Room with Closet Optional

2 or 3 Car Garage Options – see above

\$289,999 – 2 Car Garage

\$304,999 – 3 Car Garage

Not currently built in Idaho Point

IDAHO POINT

